



# Financial Plan Refresh

Public Workshop  
February 9, 2022





# Environment, Fish and Wildlife

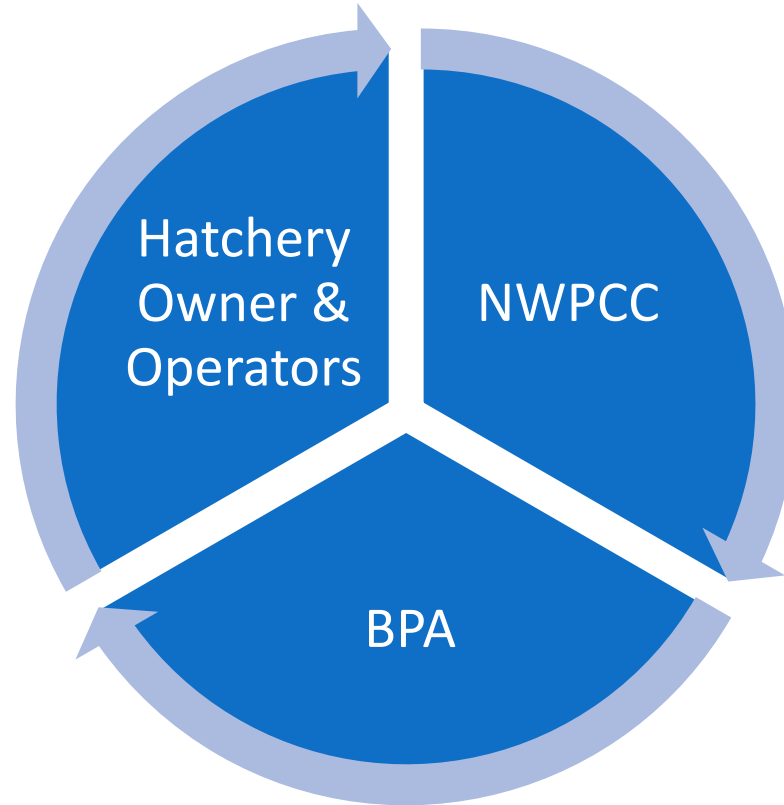
Executive Ownership: Scott Armentrout, EFW VP

Today's Presenter: Rodrigo George, EW Budget  
Manager

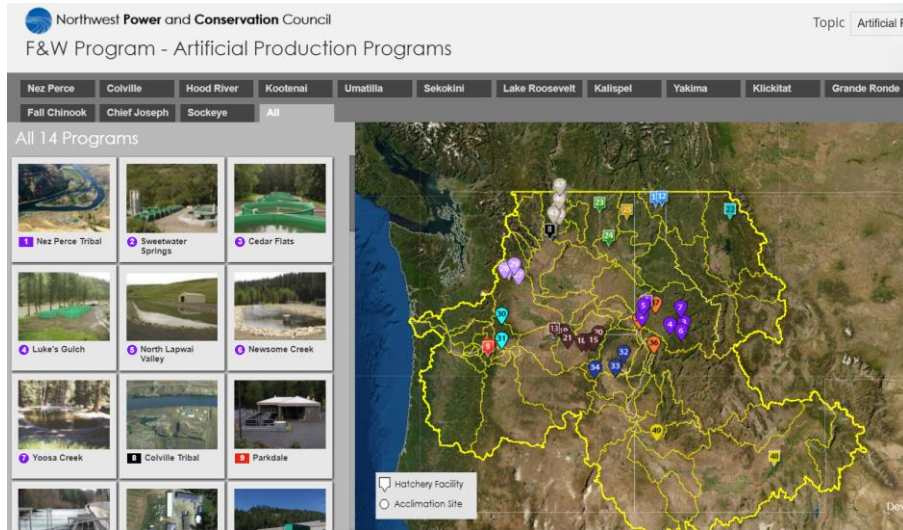




# How the Program is Organized



# Asset Criticality



## Program Level

1. Safety Net
2. Conservation
3. Supplementation

## Asset Level

1. Mission Critical Elements
2. Essential Maintenance/Improvements

# Asset Health *(asset level example)*

Table 1. Summary of Major Assets.

ITEM	DESCRIPTION / CONDITION	INSTALL DATE	EST LIFE EXPECTANCY (YEARS)	EST REMAINING LIFE (YEARS)	APPROX REPLACEMENT COST
<b><i>Important Mission Critical Elements</i></b>					
SURFACE WATER FILTRATION	Revision to improve to 20-micron filtration to reduce heat exchanger clogging.	2001	30	14	\$100,000
HEAT EXCHANGER	Needs replacement due to annual disassembly for cleaning. Upgrade to reduce loss of flow during rearing season needed.	2001	25	0	\$45,000
SURFACE WATER PUMPS (4) 50 HP	All four submersible pumps need to be replaced. Two pumps have been purchased already, two need to be purchased. Cost shown is for 2 pumps.	2001	15	0	\$50,000
<b><i>Essential Maintenance/Improvements</i></b>					
LHO HEADBOX (120 SF)					
STRUCTURE	Condition is good.	2001	40	24	\$33,000
LHO	Condition is good.	2001	30	14	\$7,500
HATCHERY BUILDING (20,800 SF) <sup>a</sup>	Condition is good.				
STRUCTURE (METAL BLDG WITH CMU)	Condition is good.	2001	40	24	\$2,000,000
ADMIN AREA HEAT PUMP SYSTEM	Condition is good.	2001	20	4	\$18,000
TRAY INCUBATORS, 168 STACKS	Condition is good. Minor maintenance on trays performed as needed.	2001	30	14	\$247,800
INCUBATION RECIRC PUMPS (10 UNITS)	Condition is good.	2011	10	4	\$25,000
NURSERY TANKS, 210 FT <sup>3</sup> EACH (38 UNITS)	Condition is good, with minor deformation and chipping of surface finish.	2001	30	14	\$399,000
GENERATOR, 20 kW DIESEL	Condition is good.	2001	30	14	\$11,500
HEAT TRANSFER BUILDING (2,400 SF) <sup>a</sup>	Condition is good.				
STRUCTURE (METAL BLDG)	Condition is good.	2001	40	24	\$307,000
CHILLER (112.5 Tons)	Condition is good	2001	25	9	\$80,000
MECH/ELEC UTILITY BLDG (1,890 SF) <sup>a</sup>					
STRUCTURE (METAL BLDG)	Condition is good. Minor maintenance to repair roof insulation needed.	2001	40	24	\$242,000
UV DISINFECTION SYSTEM	Treatment effectiveness is affected by fine sediment.	2001	30	14	\$92,000
GENERATOR, 600 kW DIESEL	Condition is good.	2001	30	14	\$175,000
POTABLE WATER PUMPHOUSE (100 SF) <sup>a</sup>					

# Asset Risk



SCORE	PROBABILITY	IMPACT
5	Almost Certain	Extreme
4	Likely	Major
3	Possible	Moderate
2	Unlikely	Minor
1	Rare	Insignificant

Risk Event Probability Scoring	Rare = .05	Unlikely = .10	Possible = .20	Likely = .40	Almost Certain = .80
Occurrence	0 - 10% Very unlikely to occur  This event could occur within the next 100 years	11 - 40% Unlikely to occur  This event could occur within the next 50 years	41 - 60% May occur about half of the time  This event could occur within the next 13 years	61 - 90% Likely to occur  This event could occur within the next 5 years	91 - 100% Very likely to occur  This event could occur within the next 2 years

Probability	IMPACT				
(5) = .90	0.05	0.09	0.18	0.36	0.72
(4) = .70	0.04	0.07	0.14	0.28	0.56
(3) = .50	0.03	0.05	0.10	0.20	0.40
(2) = .30	0.02	0.03	0.06	0.12	0.24
(1) = .10	0.01	0.01	0.02	0.04	0.08
	(1) = .05	(2) = .10	(3) = .20	(4) = .40	(5) = .80

# Hatcheries Framework Current State

## Limitations

- Lack of centralized and integrated database of hatchery assets with real-time view into the criticality and health of each individual asset

## Planned Improvements

- Last HDR assessment was in 2016 and requires refresh to reflect completed and ongoing Mission Critical Elements and Essential Maintenance Improvements

## Prioritization

- NWPCC subcommittee requests sponsors to provide non-recurring maintenance needs and works with BPA and council staff to review annual funding capacity



# Hatcheries Capital Forecast Process



# Hatcheries Capital Forecast Adjustments

## Planning

- Status of species changed
- Capacity and experience of responsible party to procure the work

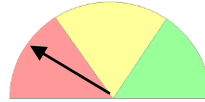
## Design

- Real time market costs
- Design changes based on site conditions uncovered during feasibility

## Construction

- Permitting requirements with increased cost
- Unforeseen conditions
- Schedule delays

# Hatcheries Capital Execution Complexity



High

## Factors

**Multiple capital projects for design and construction are in current forecasts**

**Most projects span multiple years from planning, design, construction to operations**

**Environmental compliance and permitting requirements are a significant part of the process**

**Mitigation priority and status of species change over time since commitment was made**

**Supply chain impacts, inflation and labor market changes increase complexity and affect forecasts**

# Questions?