



# Transmission Use Update

5/17/2022

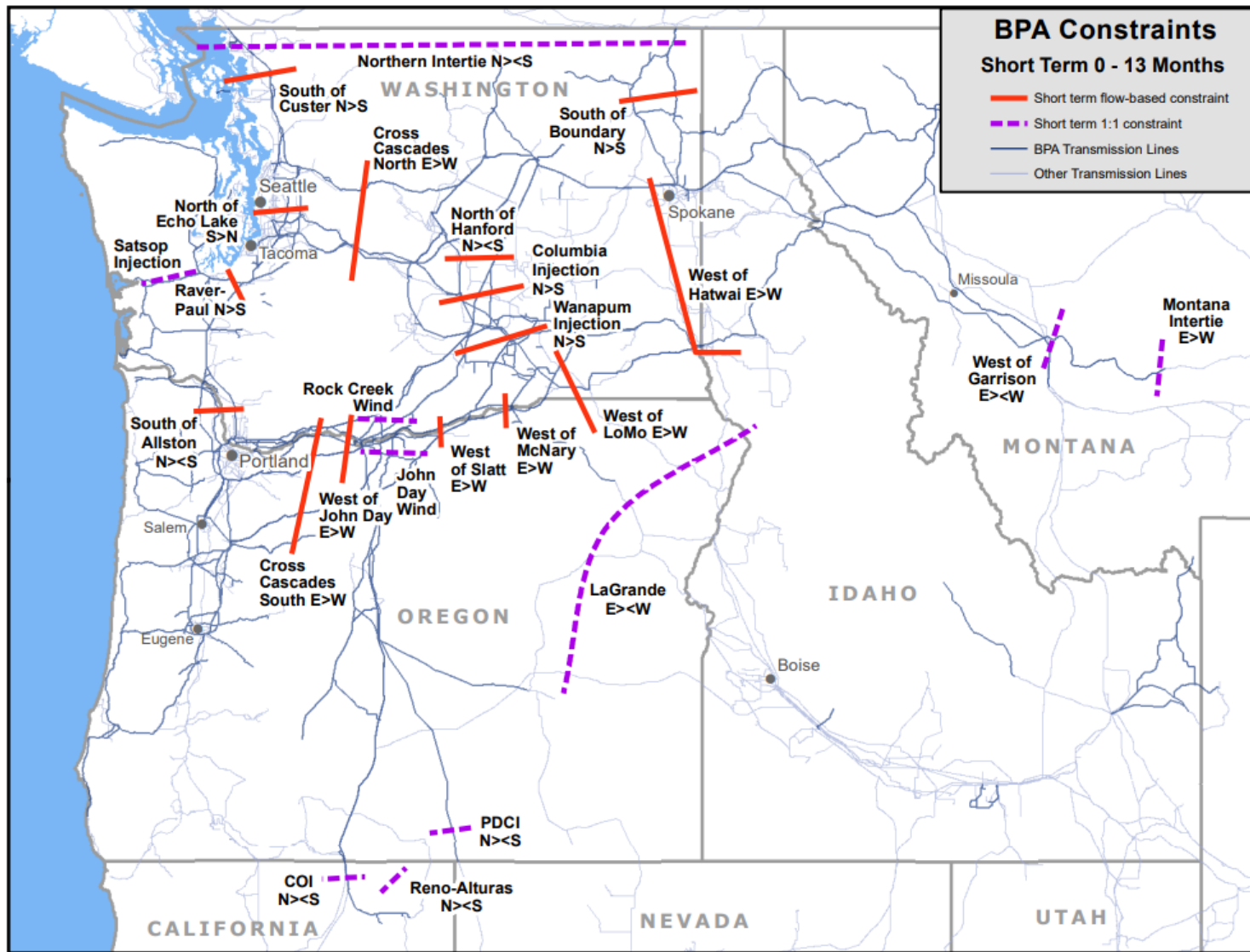


# Objective

BPA is providing the following Transmission Usage Data:

- Congestion data from the previous 7 months (October – April)
- Flows on North of Echo Lake (NOEL) and South of Allston (SOA)

# ATC Short-Term Constraints

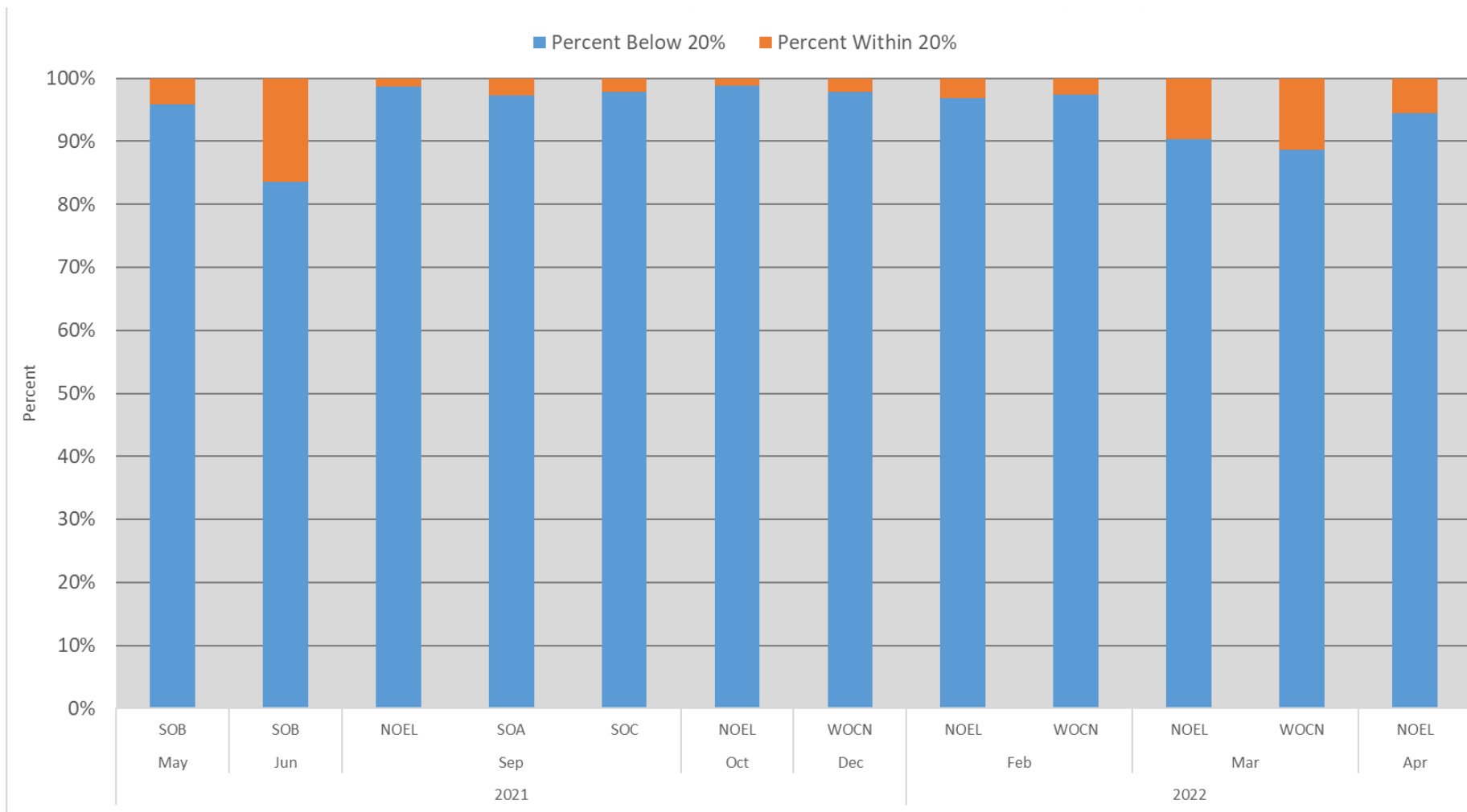


Map date: 1/26/2022

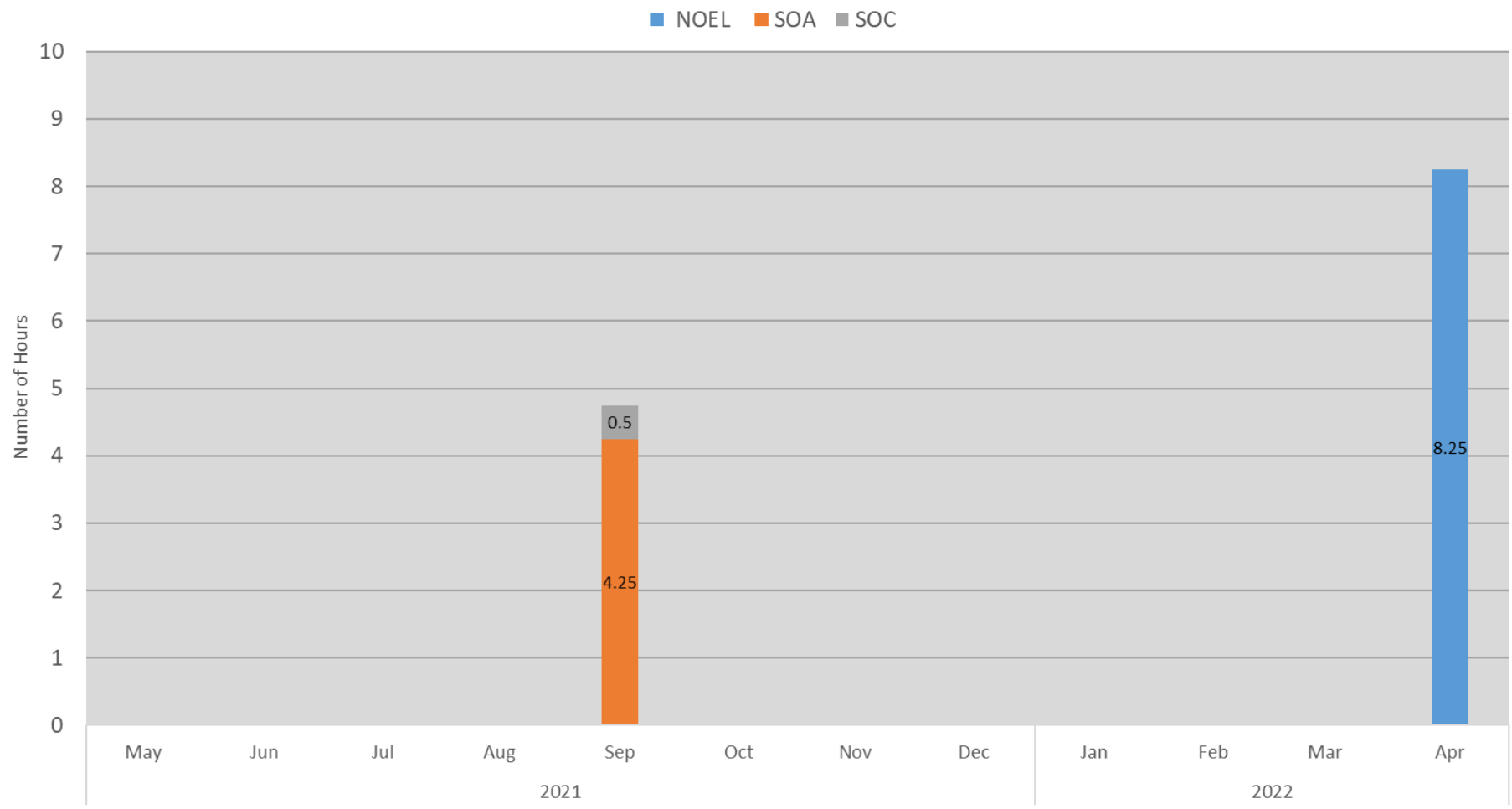
# TTC and Curtailments

- The Total Transfer Capability (TTC) is used for limiting commercial sales and can be an indicator of potential congestion, but dispatcher action is not required based on TTC alone.
- Dispatcher action is driven by the contingency studies run by the real-time study engineer. Action is only required if those studies indicate that a Facility Rating would be exceeded if certain contingencies were to occur.
- In the update period, there were no instances in which real time operations utilized curtailment or redispatch on BPA's internal flow-based paths to mitigate facility ratings violations.

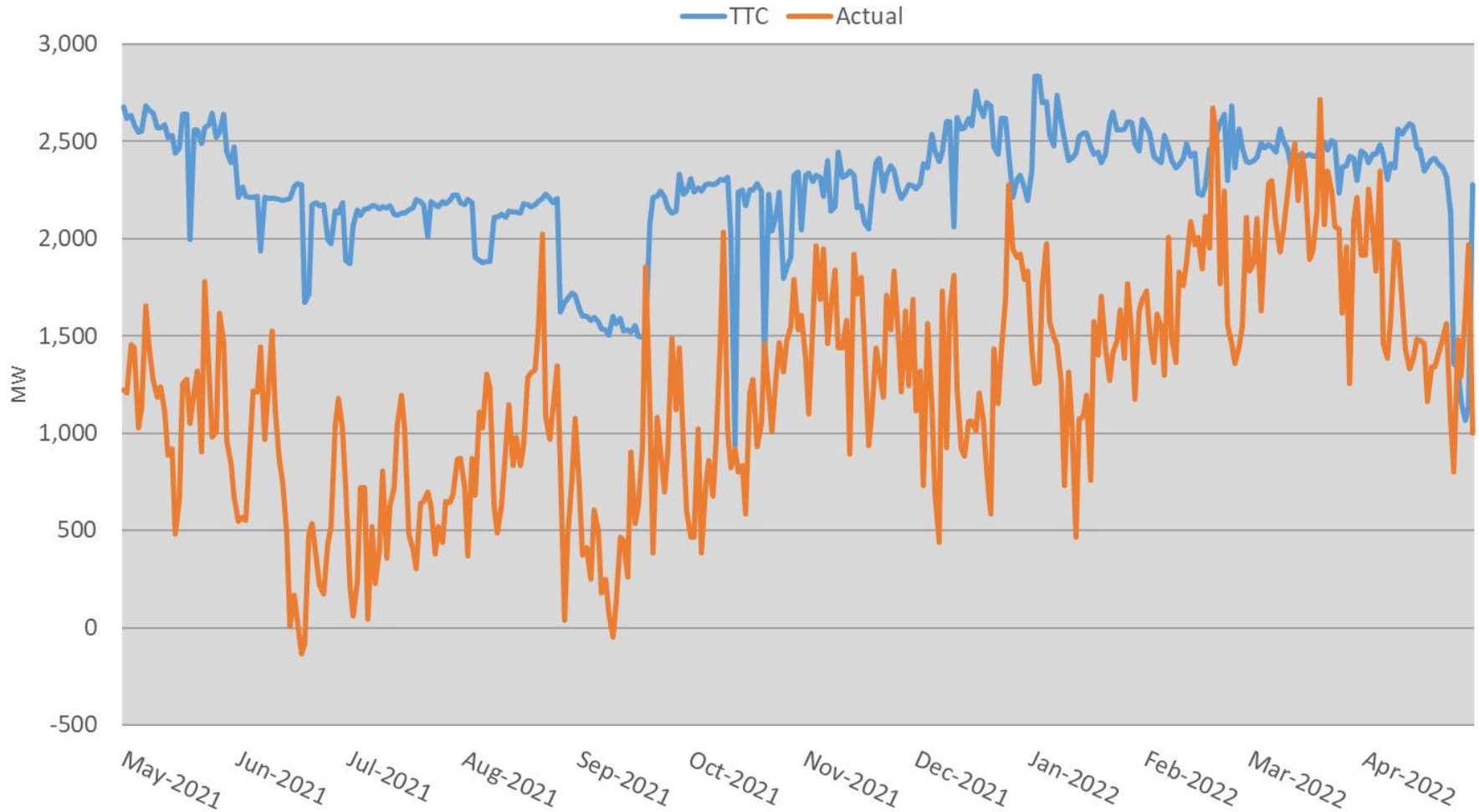
# Actual Flows Within 20% of Dynamic TTC



# # Hours When Flow => 100% Dynamic TTC

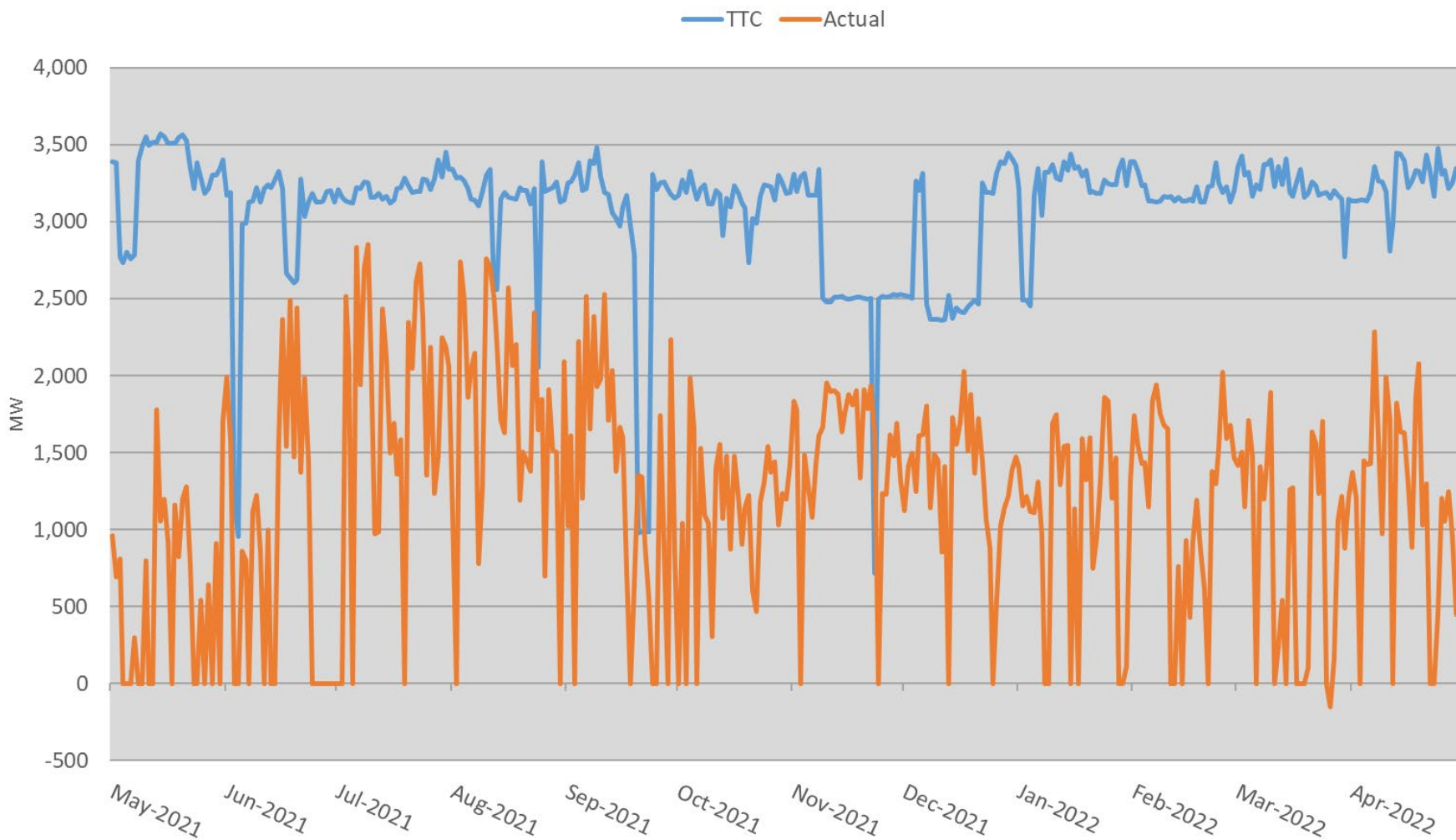


# Actual Flow vs Dynamic TTC: NOEL



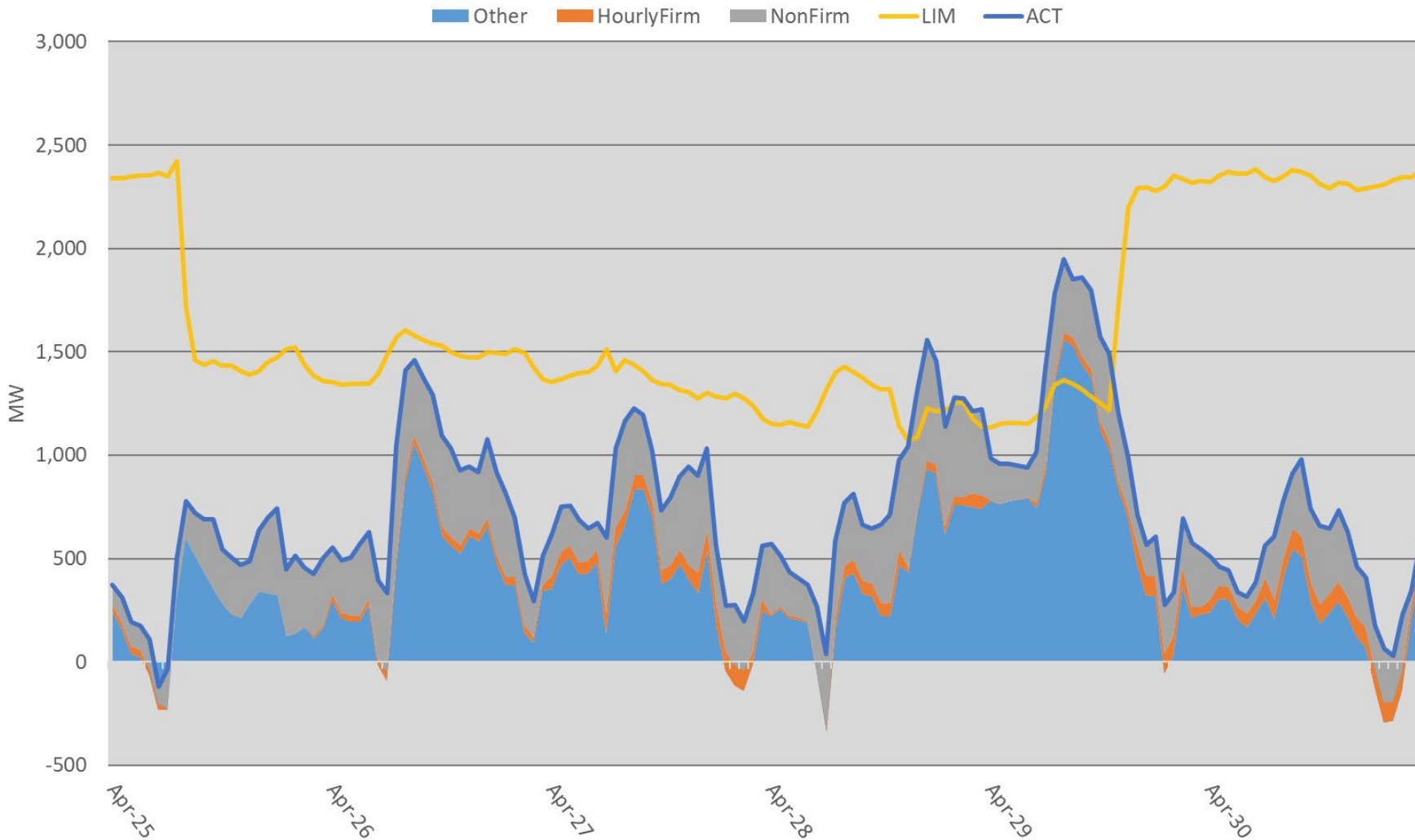


# Actual Flow vs Dynamic TTC: SOA





# Product Usage: NOEL – April 25-30, 2022



# System Event Details

<b>Event</b>	<b>Occurrence</b>	<b>Notes</b>
<b>Curtailments:</b>	<b>0</b>	System-wide
<b>Flow-Based Path Redispatch:</b>	<b>0</b>	Discretionary, NT, and Emergency
<b>TLR Avoidance Events (15 min segments):</b>	<b>0</b>	TLR Avoidance Events
<b>Refused TSRs due to TLR Avoidance:</b>	<b>0</b>	Refused TSRs due to TLR Avoidance
<b>Outages resulting in Events:</b>	<b>0</b>	
<b>Percentage of hours where actual flows were within 20% of TTC:</b>	<b>0.29% System-wide</b>	1.75% across NOEL Flowgate

# Dispatcher Actions

- Responded to Outages by adjusting TTCs
- No Redispatch needed (discretionary, NT, or emergency)
- No Curtailments needed
- No TLR Avoidance needed

*Takeaway: The Transmission System is operating efficiently and is absorbing events with potential negative impacts effectively*

# Wrap Up

- See additional transmission data at the TC-20 Hourly Firm page:  
<https://www.bpa.gov/energy-and-services/transmission/hourly-firm-data-monitoring-evaluation>
- Please send Questions/Comments to [techforum@bpa.gov](mailto:techforum@bpa.gov), with a copy to your Account Executive