

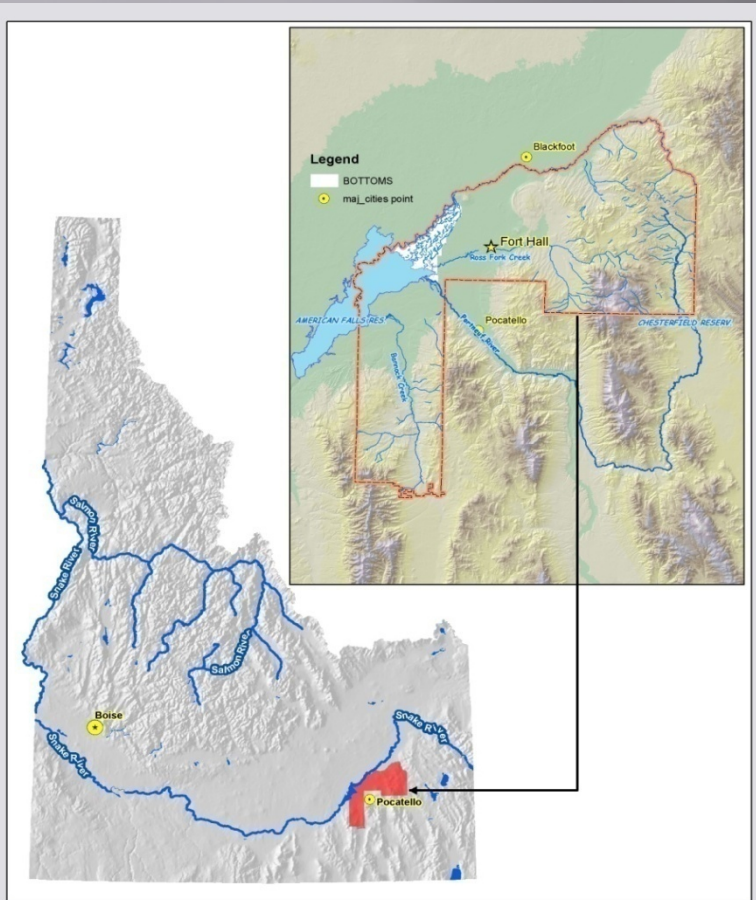
CRYSTAL SPRINGS HATCHERY FACILITIES

Shoshone-Bannock Tribes' Fish and Wildlife
Department

Bonneville Power Administration

National Forest Service – Salmon Challis

Shoshone-Bannock Tribes



- ❑ Reservation in Southern Idaho, approximately 5,600 Tribal members
- ❑ The Tribes harvest natural resources for subsistence under Article IV of the Fort Bridger Treaty of 1868.
- ❑ In 2008, the Tribes agreed to a suite of programs, including this hatchery program.

Project Purpose

- ▣ Mitigate for effects of the Federal Columbia River Power System on fish and wildlife consistent with the 1980 Northwest Power Act.
- ▣ Fulfill commitments made in the 2008 Columbia Basin Fish Accords agreement with the Shoshone-Bannock Tribes and others.
- ▣ Provide opportunities for Tribal and non-Tribal harvest.
- ▣ Maintain consistency with other regional plans.

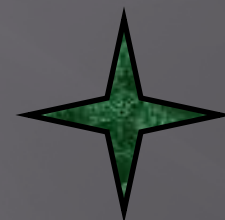
What is NEPA?

- ▣ The National Environmental Policy Act requires federal agencies to 'take a hard look' at actions before rendering a decision.
- ▣ The NEPA process is intended to produce decisions that blend resource condition in productive harmony with our use of the environment.
- ▣ In this case, the potential use of federal funds for a hatchery and federal lands for salmon management trigger NEPA.

What Can We Expect?

- NEPA and its implementing regulations spell out a process for developing the environmental review; for this project, we will develop an Environmental Impact Statement (EIS).

The goal is to finalize the EIS by the Spring 2016.



2015

2014

2016

Field studies and drafting

Revise the Draft EIS

Scoping Period Begins

Publish the Draft EIS

Final EIS and ROD



Objectives for YFSR and Panther Creek

- ▣ The Yankee Fork and Panther Creek spring Chinook programs have the following conservation, harvest and cultural objectives:
 - Cultural Objective: Tribal members would have opportunities to harvest using traditional and contemporary methods.
 - Harvest Objective: The program will provide, on average, approximately 1,000 Chinook in the Yankee Fork and 800 Chinook in Panther Creek for harvest.
 - Conservation Objective: The programs will contribute to the recovery of the Snake River spring/summer Chinook ESU by restoring a Maintained population of 500 locally adapted Chinook spawners in the Yankee Fork and 500 spawners in Panther Creek (a total of 1,000 fish).

Production Objectives for YFSR and Panther Creek

Adult Escapement Priority	Yankee Fork Salmon River	Panther Creek
Hatchery Broodstock	358 (NOR+HOR) adults	214 (NOR+HOR) adults
Natural Escapement	~500 (NOR+HOR) adults	~500 (NOR+HOR) adults
Harvest	~1,000 (NOR+HOR) adults	~800 (NOR+HOR) adults

*Yankee Fork production targets for smolt production range from 450,000-600,000 smolts.

**Panther Creek production targets for smolt production range from 300,000-400,000 smolts.

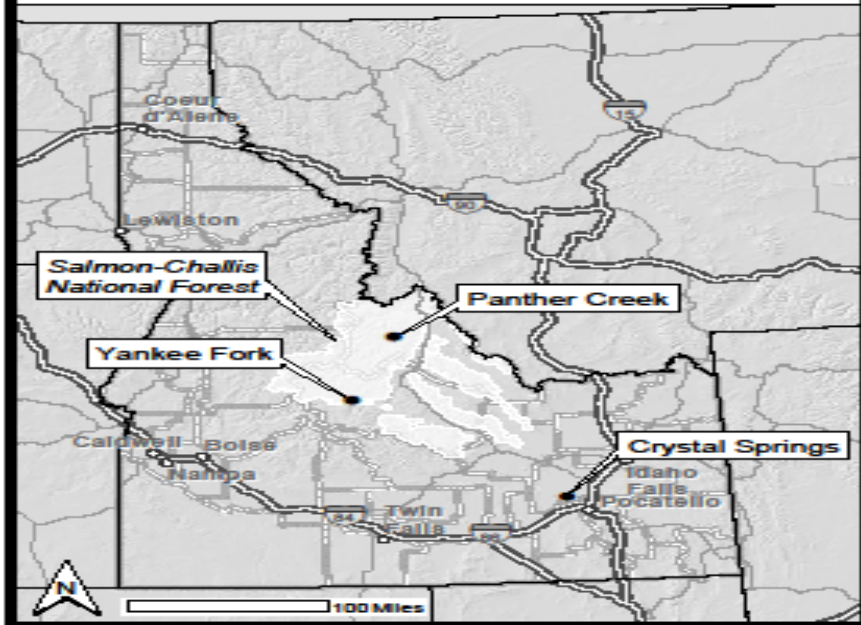
Production Objectives for YCT

- ▣ The Tribes will initially produce 10,000 catchable trout for release in the Fort Hall Bottoms to supplement harvest opportunities.
- ▣ The Tribes may opt for multiple release strategies if monitoring provides sound guidance.

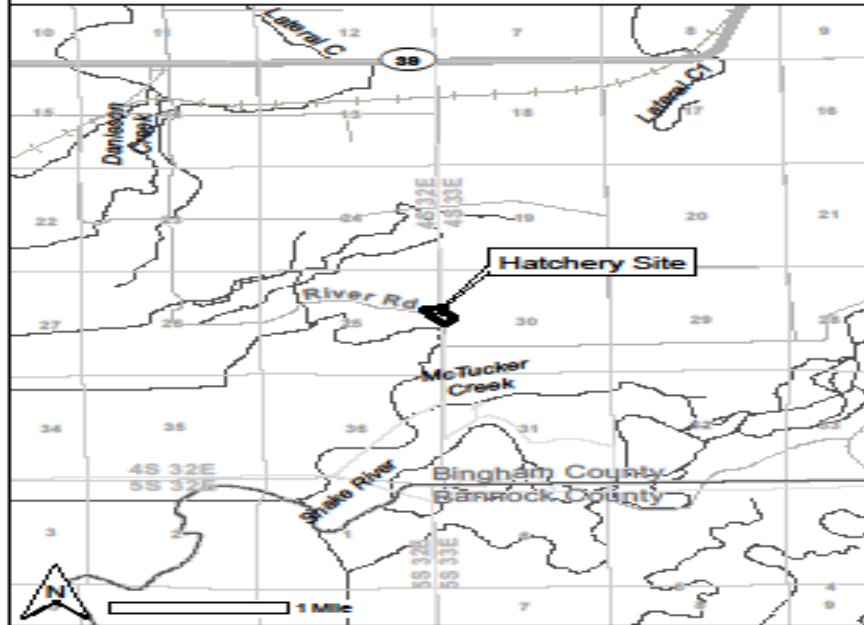


HATCHERY FACILITIES

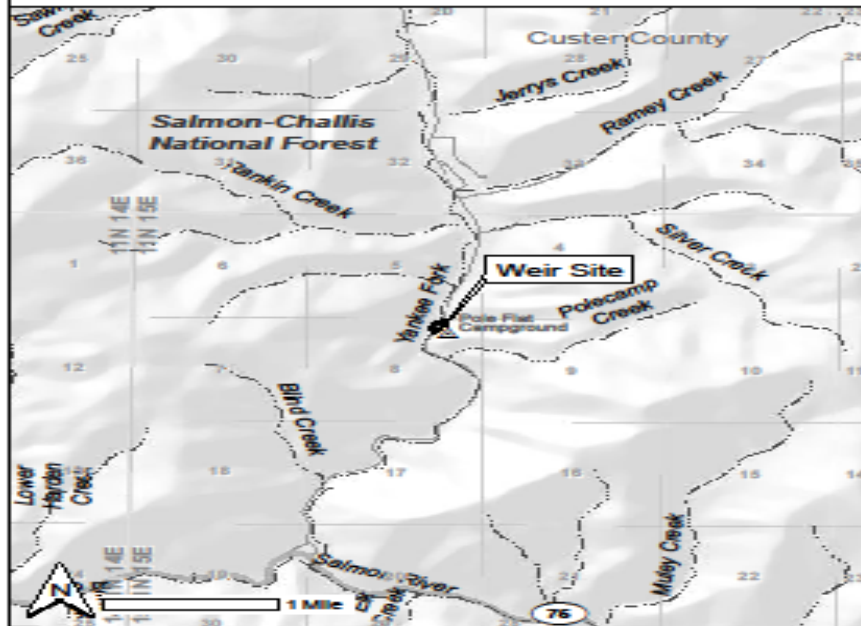
OVERVIEW



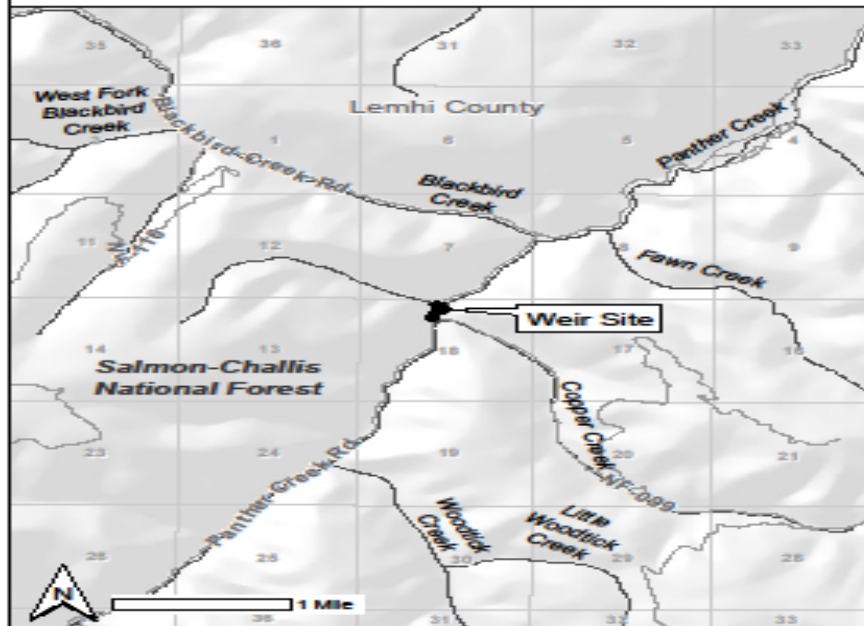
Crystal Springs Hatchery



Yankee Fork Weir



Panther Creek Weir





ELEVATION 1

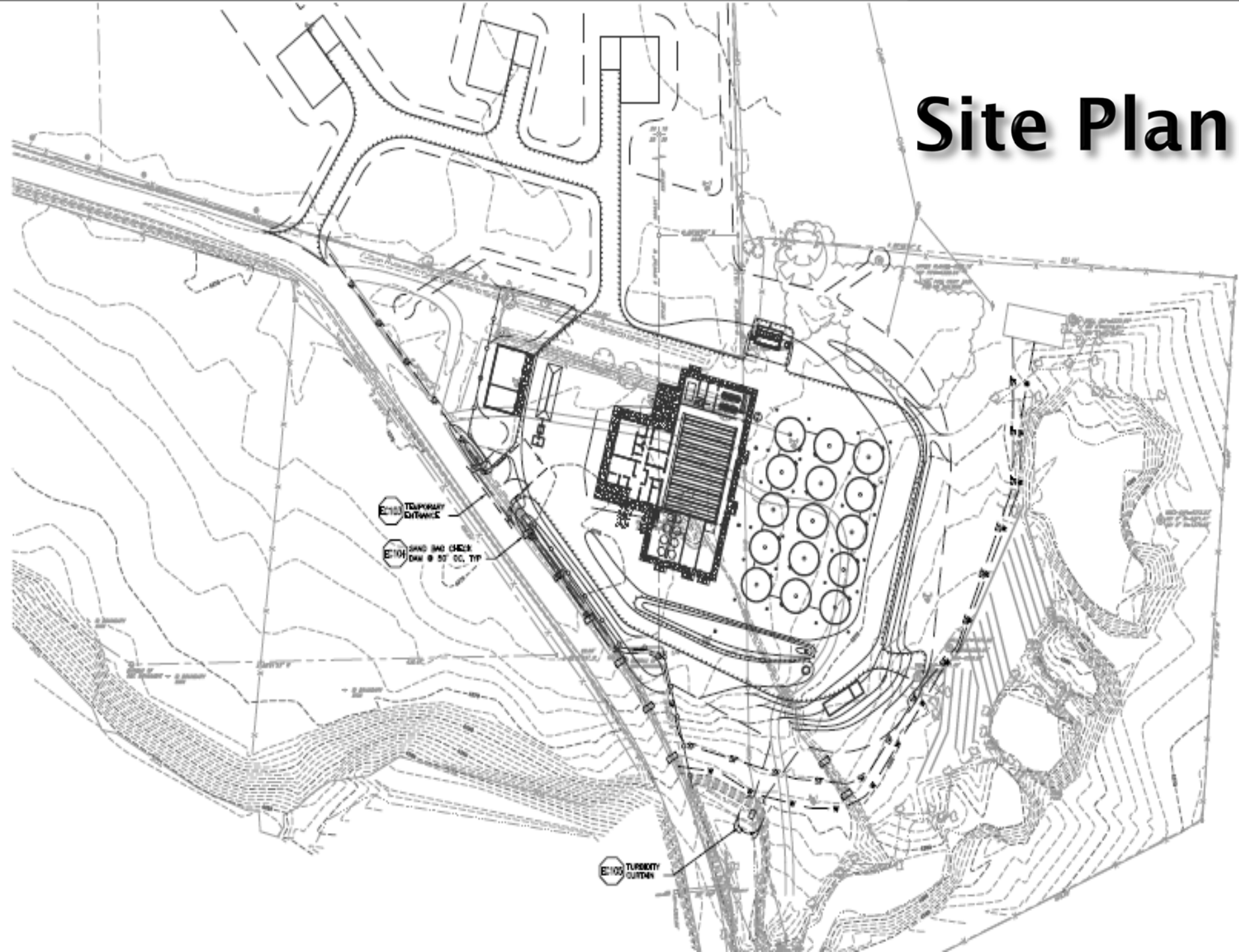
1/8"

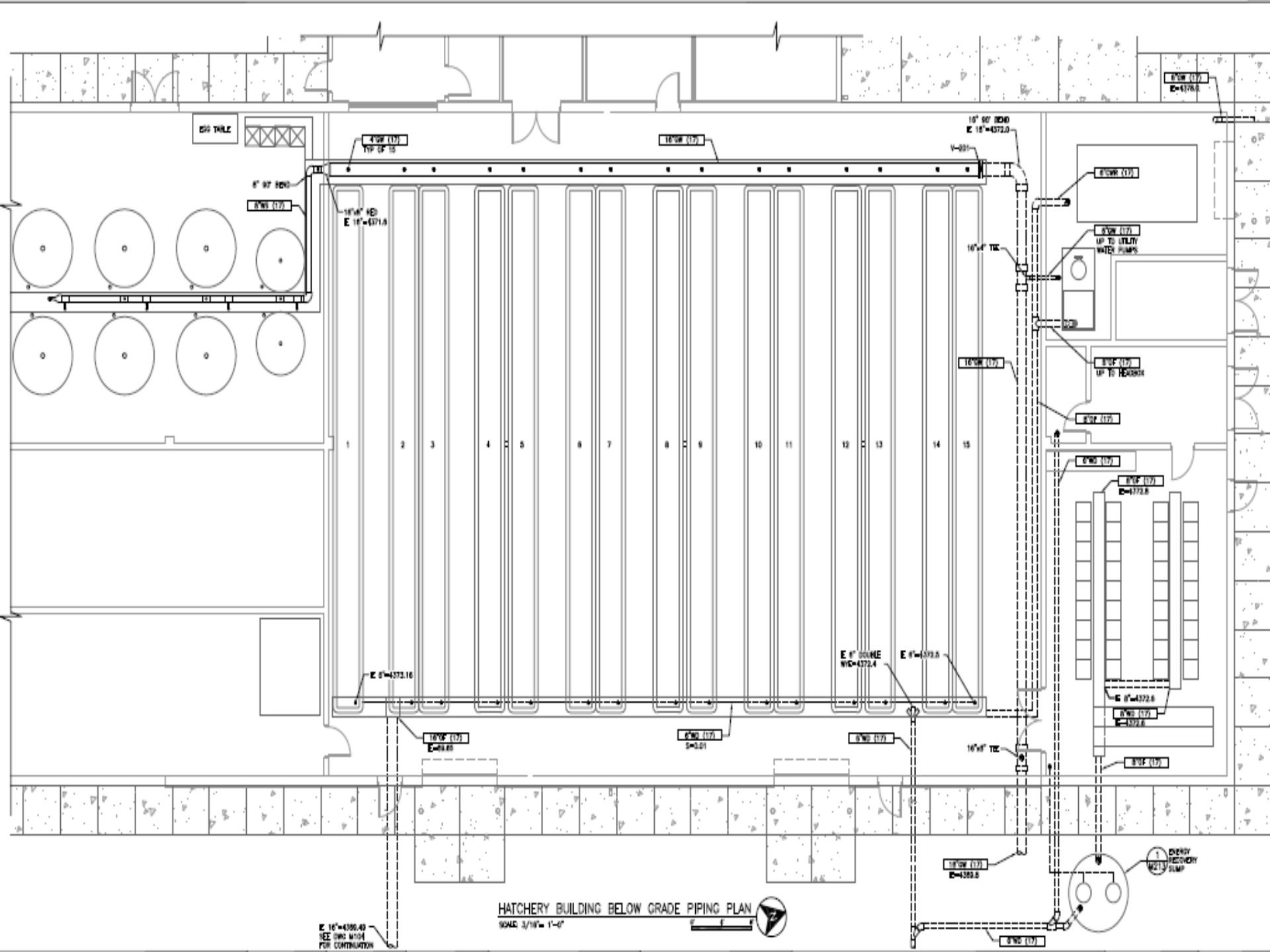


ELEVATION 2

1/8"

Site Plan





80 THRU

8" 90' 900

400' (17)
TOP OF IS

1000' (17)

10" 90' 900
E 15"=4372.0

10" 1" 100
E 15"=4371.8

800' (17)

800' (17)
UP TO UTILITY
WATER PUMPS

800' (17)
UP TO REAR

800' (17)

800' (17)

800' (17)
D=4372.8

800' (17)
E=4372.8

800' (17)
E=4372.8

800' (17)

E 15"=4372.16

E 15" 3000E
WD=4372.4

E 15"=4372.8

1000' (17)
E=4372.8

800' (17)
S=4372.8

800' (17)

10" 1" 100

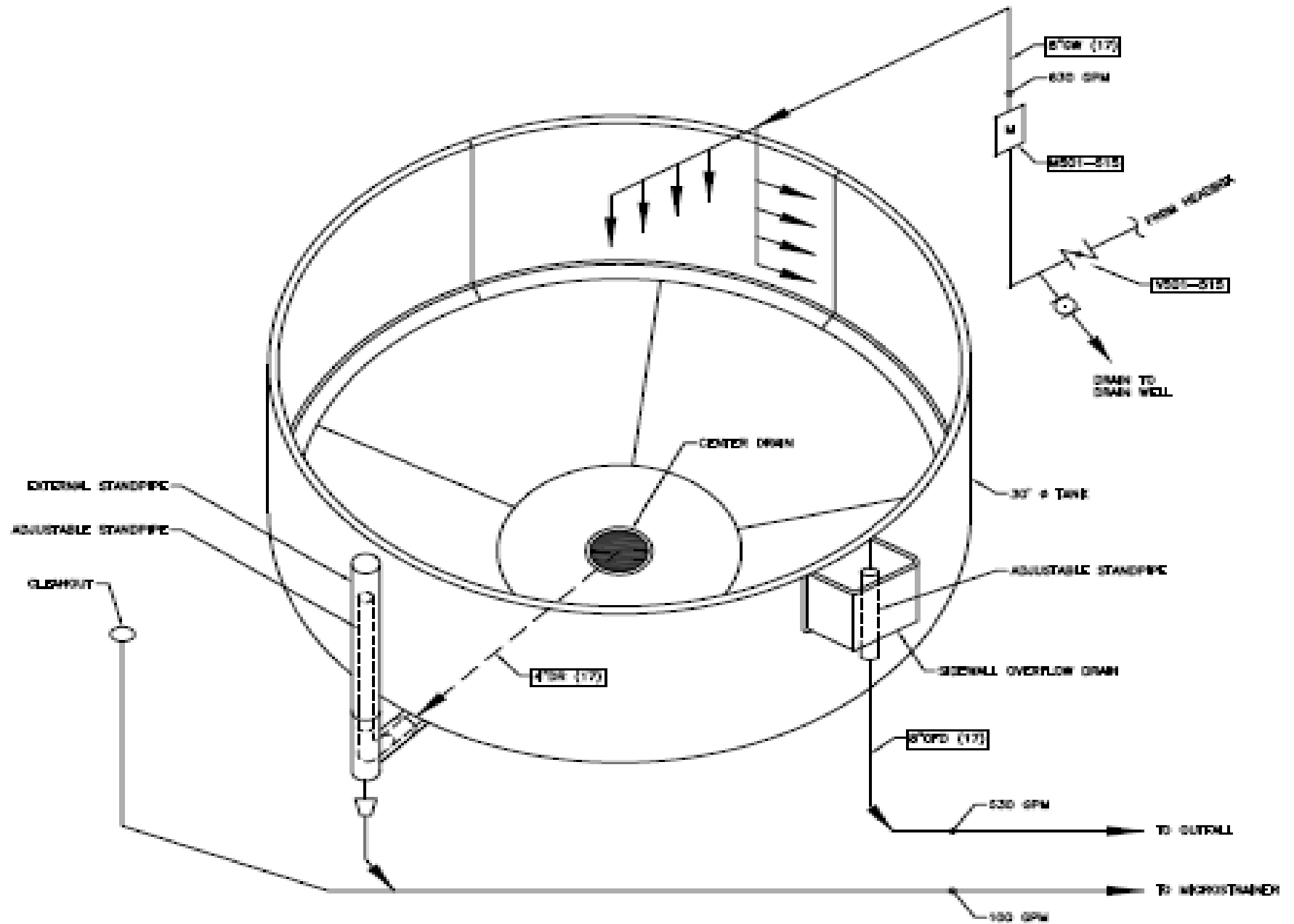
800' (17)
D=4372.8

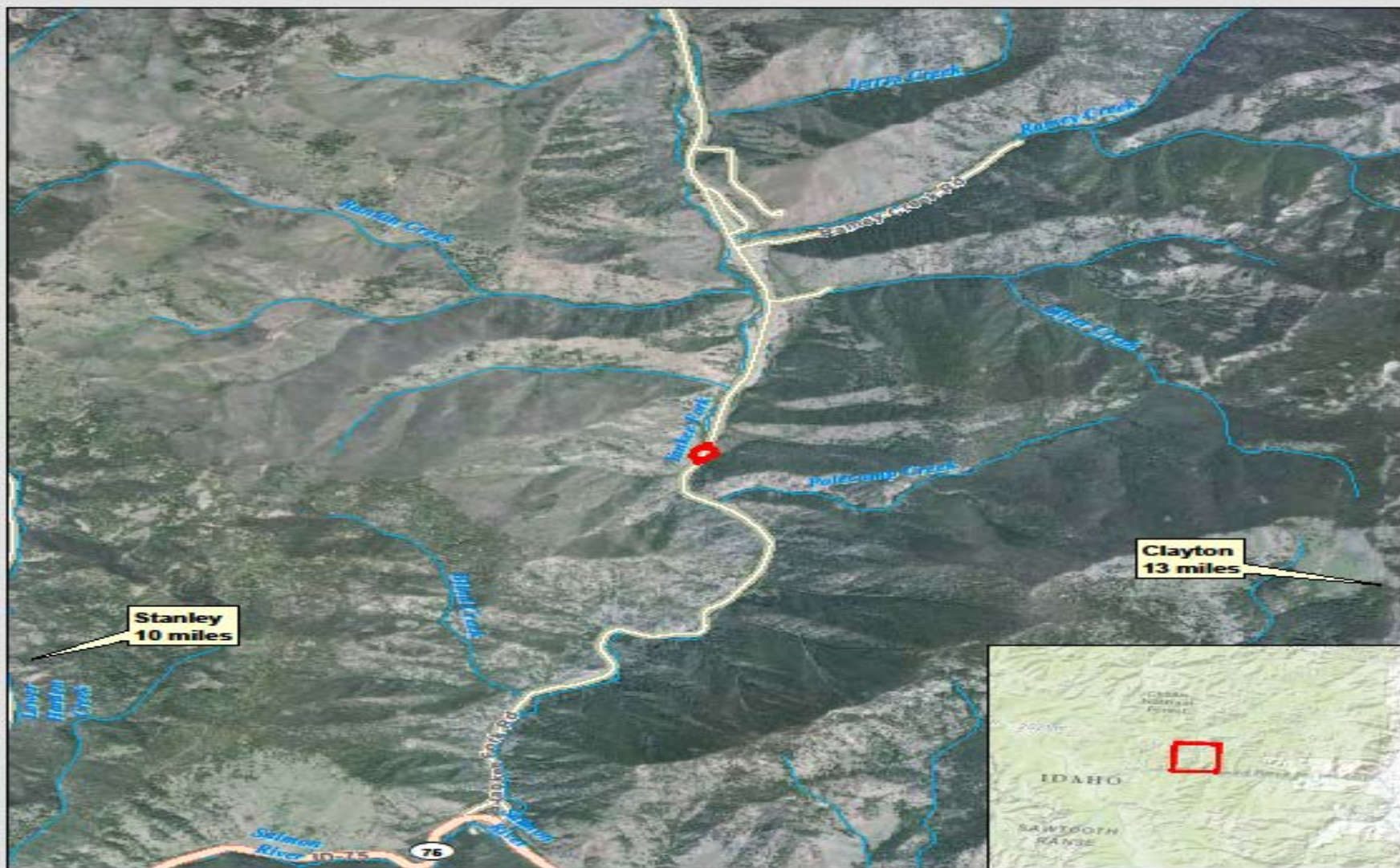
1 ENERGY
RECOVERY
SLUMP

E 15"=4386.40
SEE DWG M104
FOR CONTINUATION

HATCHERY BUILDING BELOW GRADE PIPING PLAN
SCALE 3/16"= 1'-0"





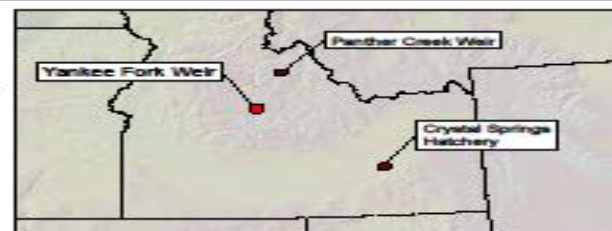


**Yankee Fork Weir
Public Notification Map**
Sunbeam Quadrangle
Custer County, ID
(3.3 Acres)

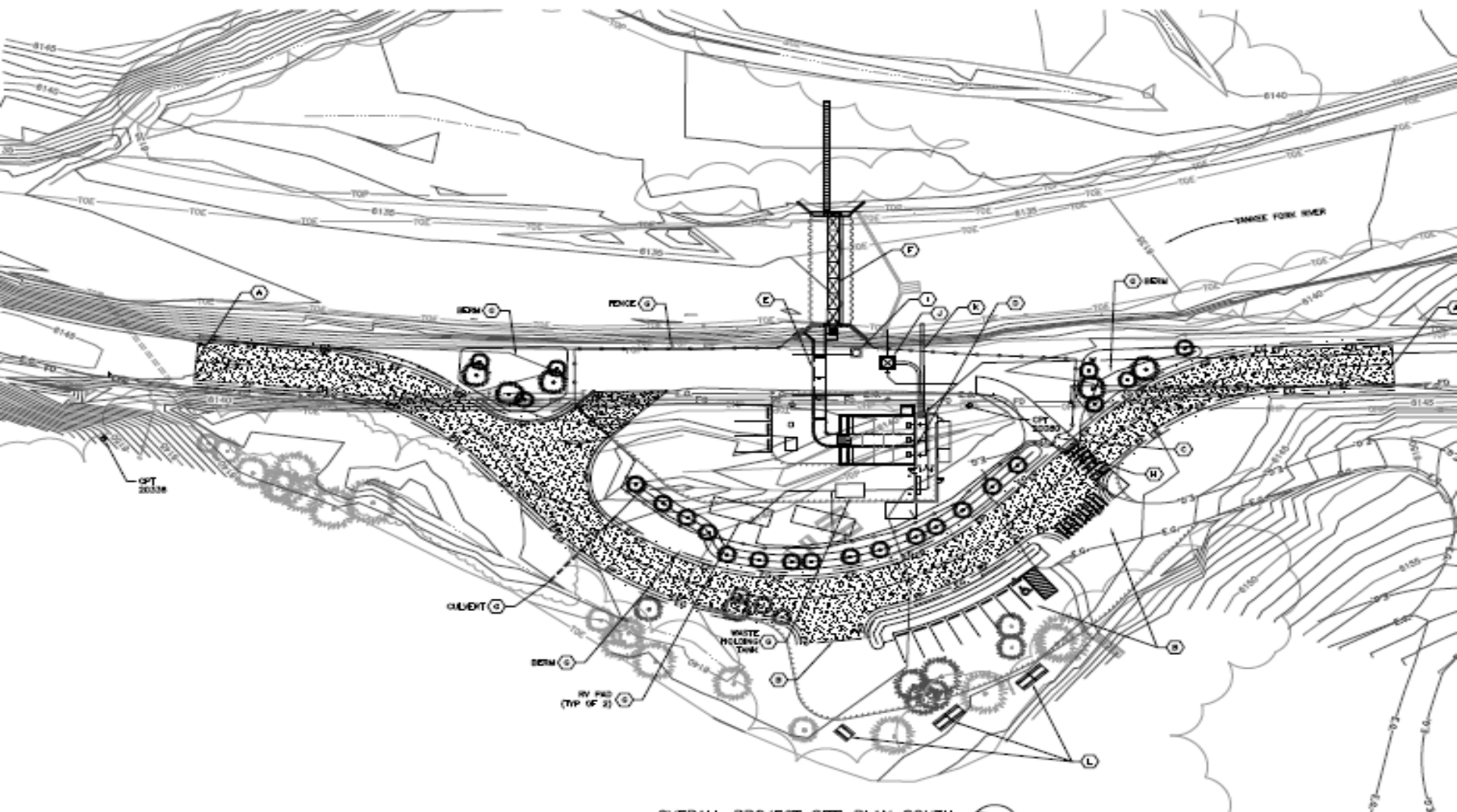
 Subject Property

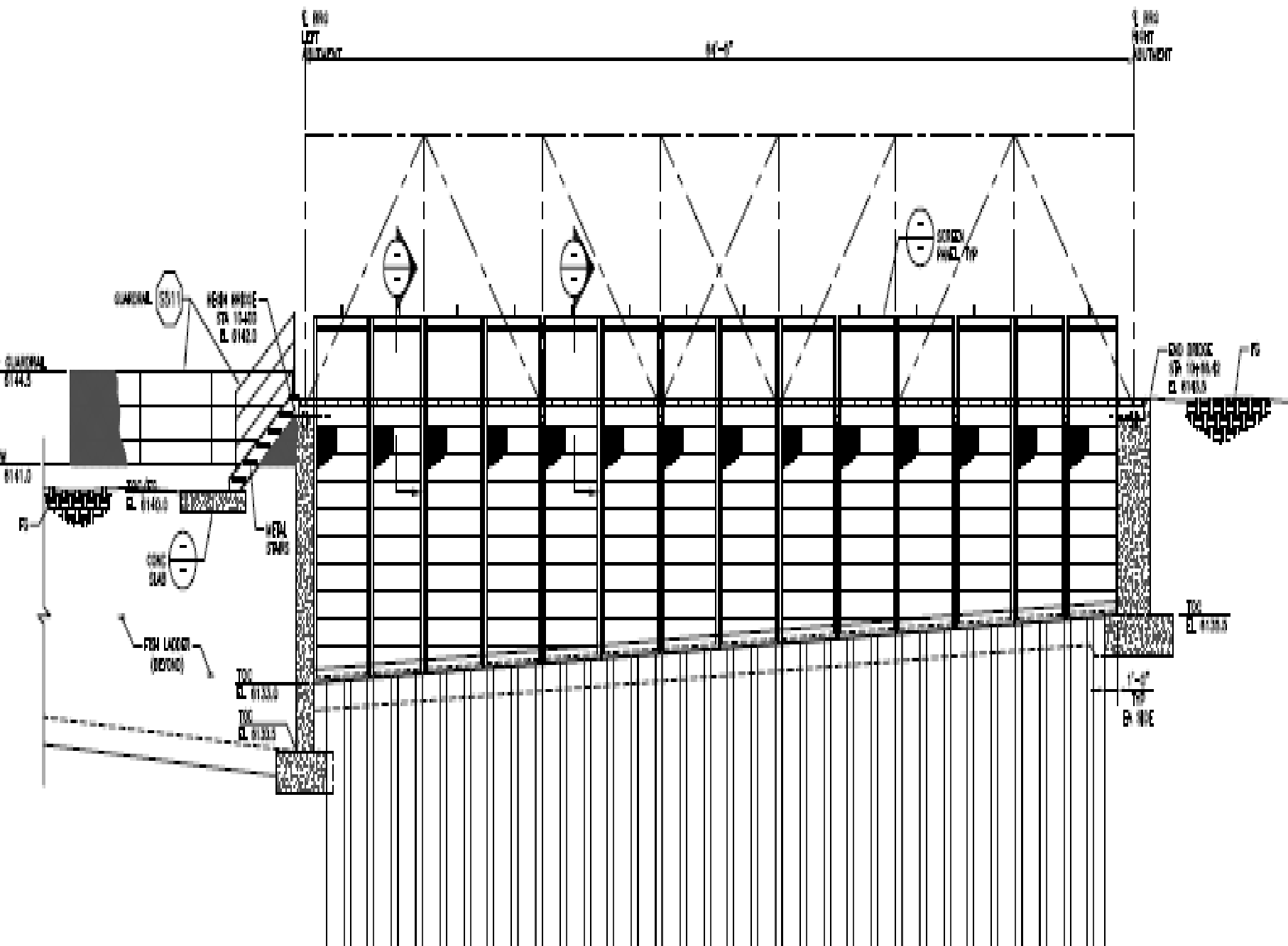


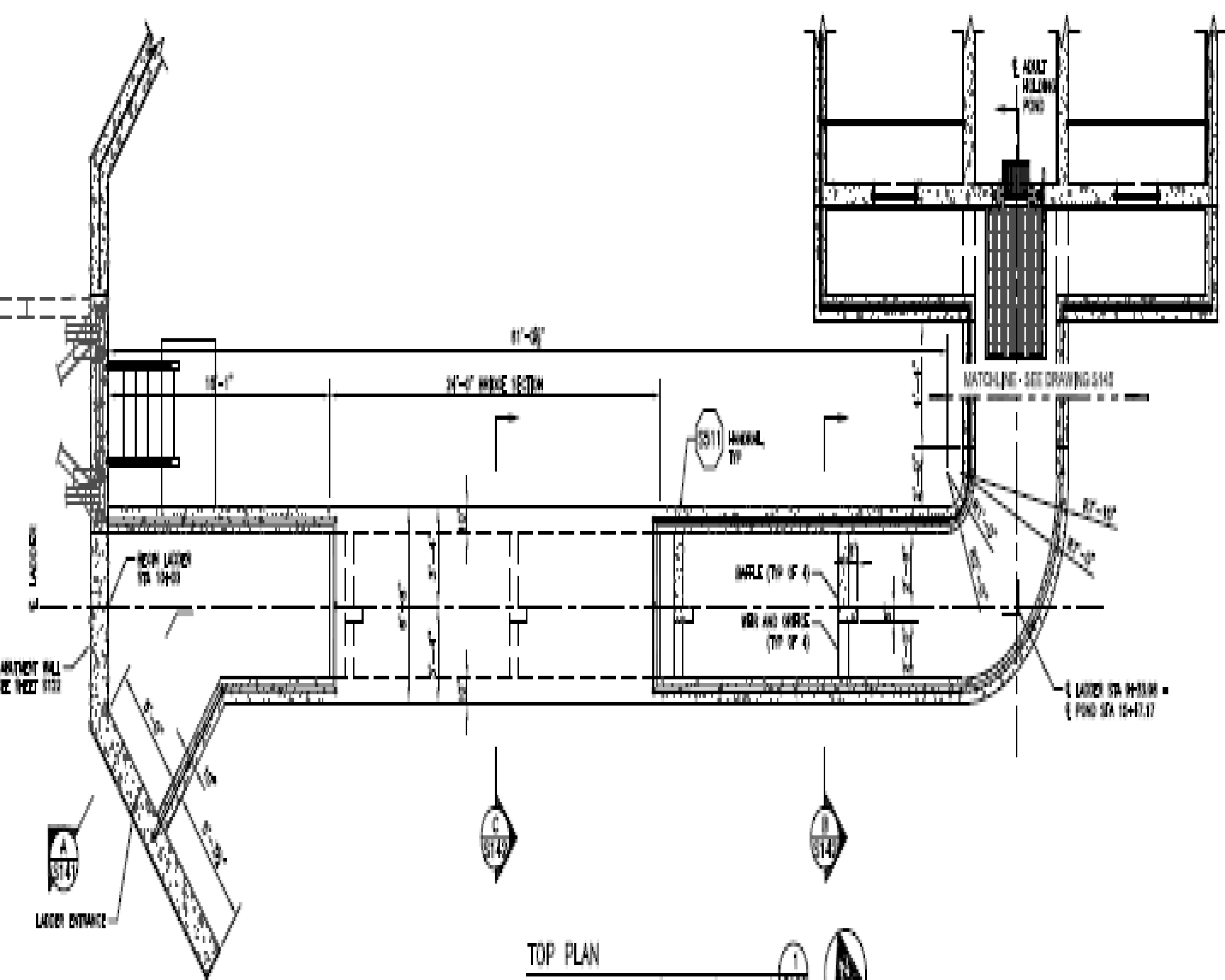
8/29/2013



Initial Site Lay-Out for YF Satellite

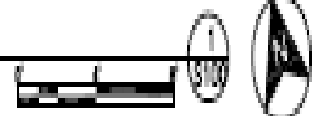


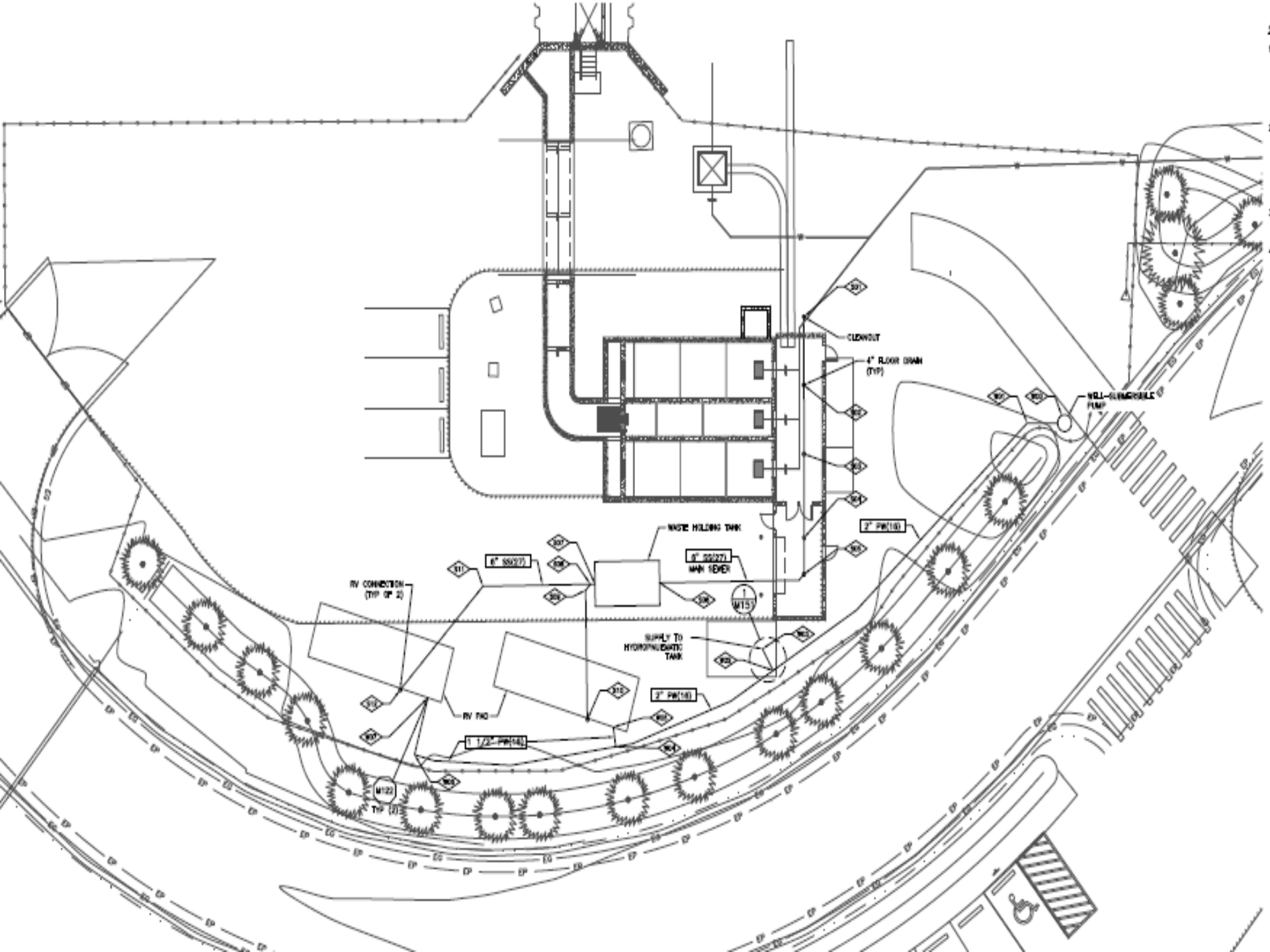




TOP PLAN

SCALE 1/4" = 1'-0"





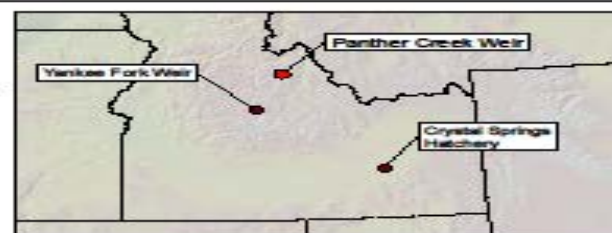


**Panther Creek Weir
Public Notification Map**
Blackbird Creek Quadrangle
Lemhi County, ID
(2.5 Acres)

 Subject Property



8/29/2013

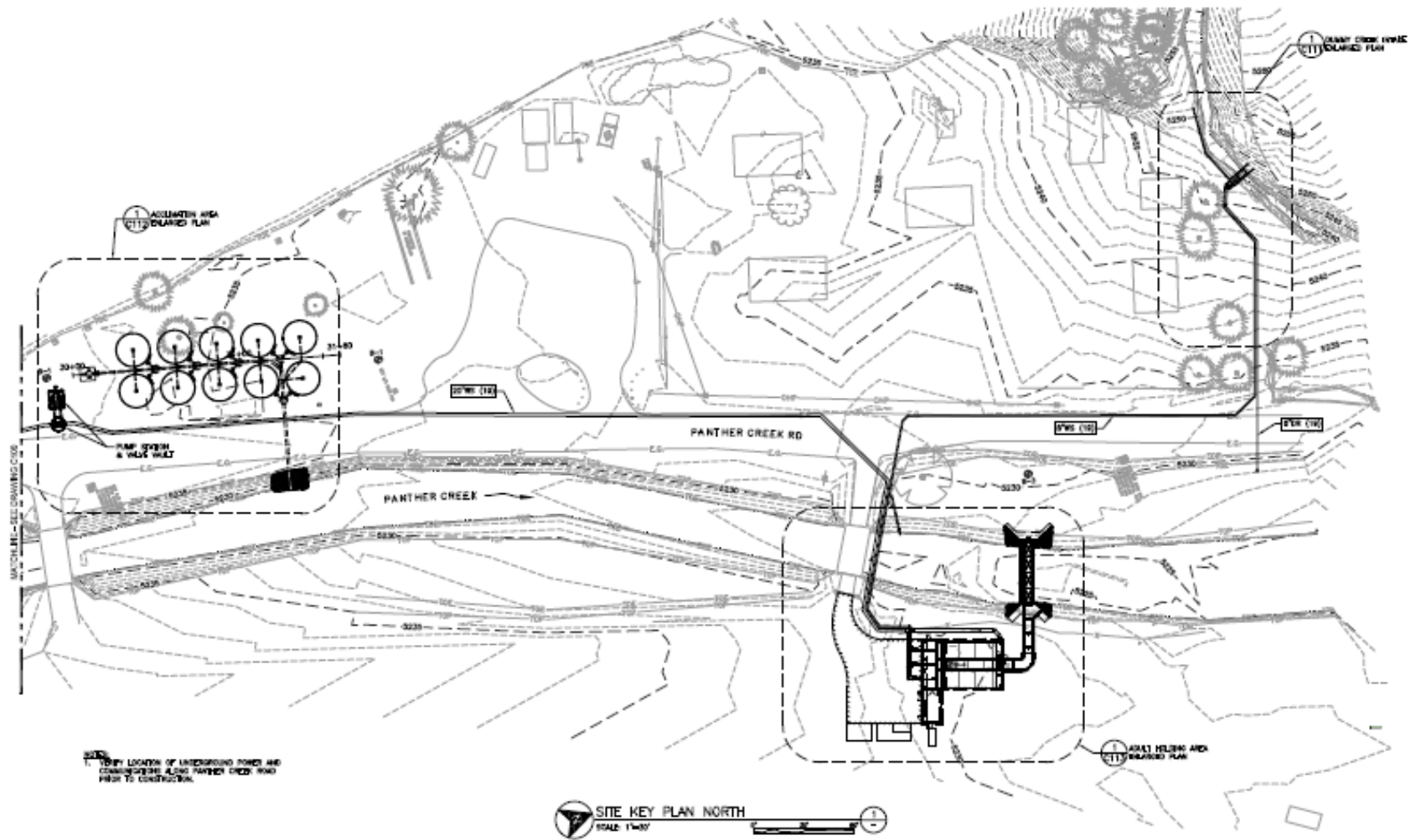


Background for Panther Creek

- ▣ The Panther Creek system was also key to the subsistence lifestyle of the people.
- ▣ Unfortunately, this system was also heavily impacted by the effects of mining activities.
- ▣ The local population of Chinook was determined to be extirpated.



Panther Creek Satellite



1. TRAP LOCATION OF UNDERGROUND TOWERS AND CONDUITS ALONG PANTHER CREEK ROAD PRIOR TO CONSTRUCTION.

NO.	DATE	BY	DESCRIPTION
1	12/25/13	MC	FOR DESIGN REVIEW SUBMITTAL
2	01/17/14	MC	FOR DESIGN REVIEW SUBMITTAL
3	02/11/14	BT	FOR DESIGN REVIEW SUBMITTAL
4	02/11/14	BT	FOR DESIGN REVIEW SUBMITTAL
5	02/11/14	BT	FOR DESIGN REVIEW SUBMITTAL
6	02/11/14	BT	FOR DESIGN REVIEW SUBMITTAL
7	02/11/14	BT	FOR DESIGN REVIEW SUBMITTAL
8	02/11/14	BT	FOR DESIGN REVIEW SUBMITTAL
9	02/11/14	BT	FOR DESIGN REVIEW SUBMITTAL
10	02/11/14	BT	FOR DESIGN REVIEW SUBMITTAL





McMILLEN, LLC
 1401 S. BROADWAY, SUITE 100
 DENVER, CO 80202
 PHONE: 303.733.4414
 FAX: 303.733.4414



SHOSHONE-BANNOCK TRIBES
 PANTHER CREEK TRAP AND ACCLIMATION FACILITY
 SPRING CHINOOK SUPPLEMENTATION PROGRAM
 PANTHER CREEK SATELLITE FACILITY
 SITE KEY PLAN NORTH

DESIGNED BY	MC
DRAWN BY	BT
CHECKED BY	BT
ISSUED DATE	12/22/13
SCALE	AS NOTED

C101

Hatchery Goals

